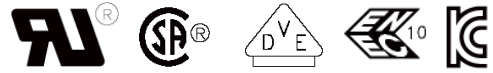


EMI/EMC FILTER

IR3 SERIES



FEATURES

- Double pole power ON/OFF switch and comply with IEC 61058-1.
- Good shield effect by using metal case.
- Meet over voltage category II of IEC 60664 and comply with IEC 60950.
- Uses IEC connector that meets the safety standards from certification bodies.

APPLICATIONS

- Digital equipments.
- Personal computers and peripherals.
- Measuring and testing instruments.
- Communication equipments.
- Medical equipments.

SPECIFICATIONS

Model	Rated Voltage (AC,DC)	Rated Current	Leakage Current (250V AC)	Operating Temperature(°C)																						
IR3-(N)03**-*	250V	1A	-	-25°C to +85°C including temperature rise.																						
IR3-(N)06**-*	250V	2A	-																							
IR3-(N)10**-*	250V	3A	-																							
IR3-(N)***0-*	-	-	0.01mA max.	<p style="text-align: center;">Derating Curve</p> <table border="1"> <caption>Derating Curve Data</caption> <thead> <tr> <th>Ambient Temperature [°C]</th> <th>Current Ratio [%]</th> </tr> </thead> <tbody> <tr><td>0</td><td>100</td></tr> <tr><td>10</td><td>100</td></tr> <tr><td>20</td><td>100</td></tr> <tr><td>30</td><td>100</td></tr> <tr><td>40</td><td>100</td></tr> <tr><td>50</td><td>85</td></tr> <tr><td>60</td><td>65</td></tr> <tr><td>70</td><td>45</td></tr> <tr><td>80</td><td>20</td></tr> <tr><td>85</td><td>0</td></tr> </tbody> </table>	Ambient Temperature [°C]	Current Ratio [%]	0	100	10	100	20	100	30	100	40	100	50	85	60	65	70	45	80	20	85	0
Ambient Temperature [°C]	Current Ratio [%]																									
0	100																									
10	100																									
20	100																									
30	100																									
40	100																									
50	85																									
60	65																									
70	45																									
80	20																									
85	0																									
IR3-(N)***C-*	-	-	0.075mA max.																							
IR3-(N)***D-*	-	-	0.10mA max.																							
IR3-(N)***G-*	-	-	0.15mA max.																							
IR3-(N)***E-*	-	-	0.20mA max.																							
IR3-(N)***1-*	-	-	0.25mA max.																							
IR3-(N)***2-*	-	-	0.35mA max.																							
IR3-(N)***3-*	-	-	0.50mA max.																							

Note:

Test Voltage: 1500V AC one minute line to earth.

Insulation Resistance: 300Mohm min. at 500V DC.

Voltage Drop: 1V max. at rated current.

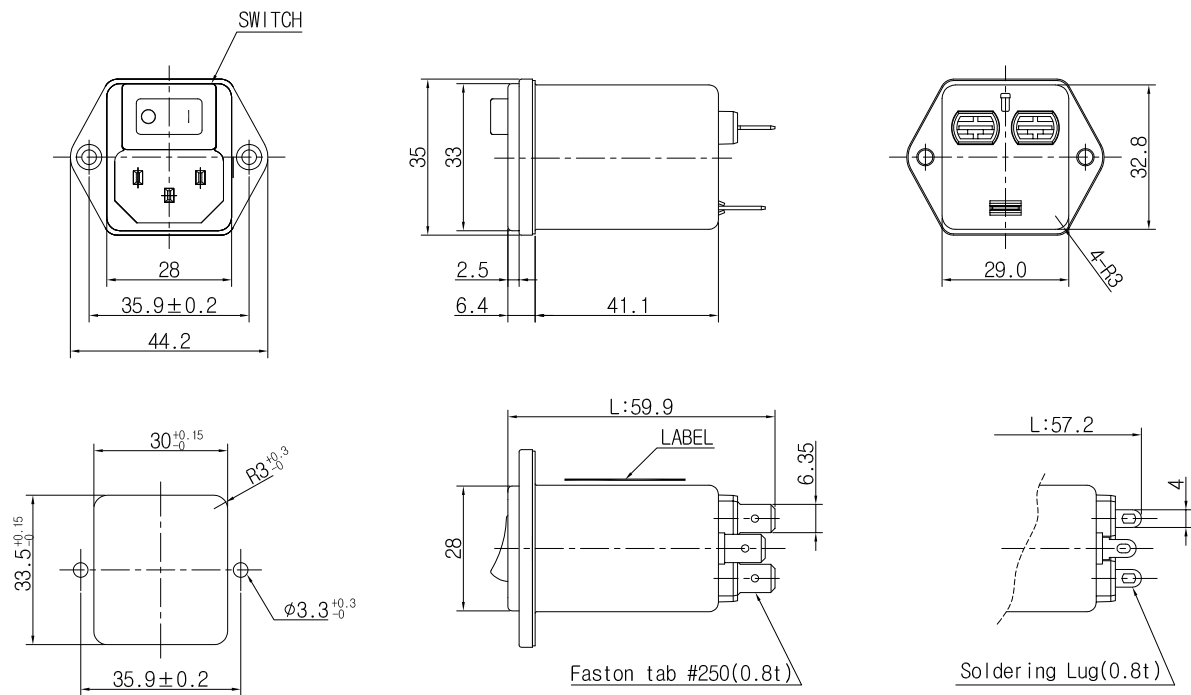
Weight: 80g

Inlet: Compatible with IEC 60320-1, C14

■ Model Number Construction

I	R3	N02	4	2	H
Input Connector I: IEC Connector	Special Design R3:Screw Mounting /With Switch	Current Rating : ACrms 03 : 3amp 06 : 6amp 10 : 10amp N**: Highest permeability	Line-Line Cap.Value 2 : 0.022uF 3 : 0.033uF 4 : 0.047uF 6 : 0.068uF A : 0.1 uF B : 0.15 uF C : 0.22 uF D : 0.33 uF	Line-Gnd Cap.Value C : 330pF D : 470pF G : 680pF E : 1000pF 1 : 1500pF 2 : 2200pF 3 : 3300pF 0 : None	Output Terminal Style H : Faston Tab #250 S : Solder Lug

Shapes and Dimensions



Panel Cutout dimension
mount from front side.

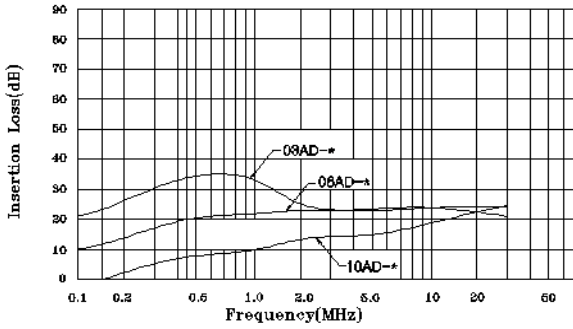
* Alternate terminal for IR3-****H

* Unit : mm
* General tolerance : ±1.0

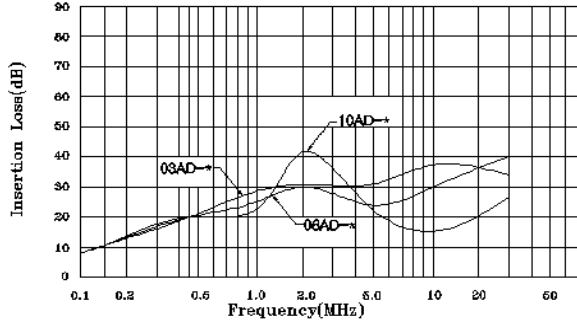
* Alternate terminal for IR3-****S

Attenuation Characteristics

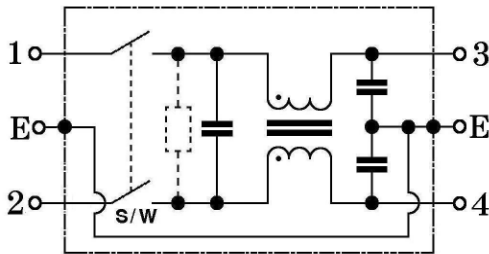
●Common Mode(IR3-03/06/10**-*)



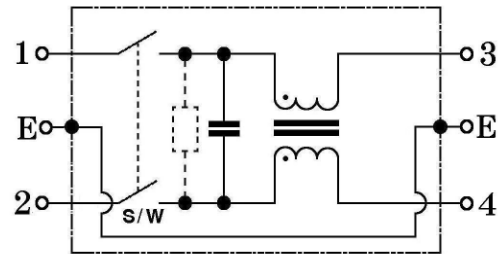
●Differential Mode(IR3-03/06/10**-*)



●Circuit Diagram



IR3-***-* TYPE



IR3-***0-* TYPE

●Measurement configuration

